

4

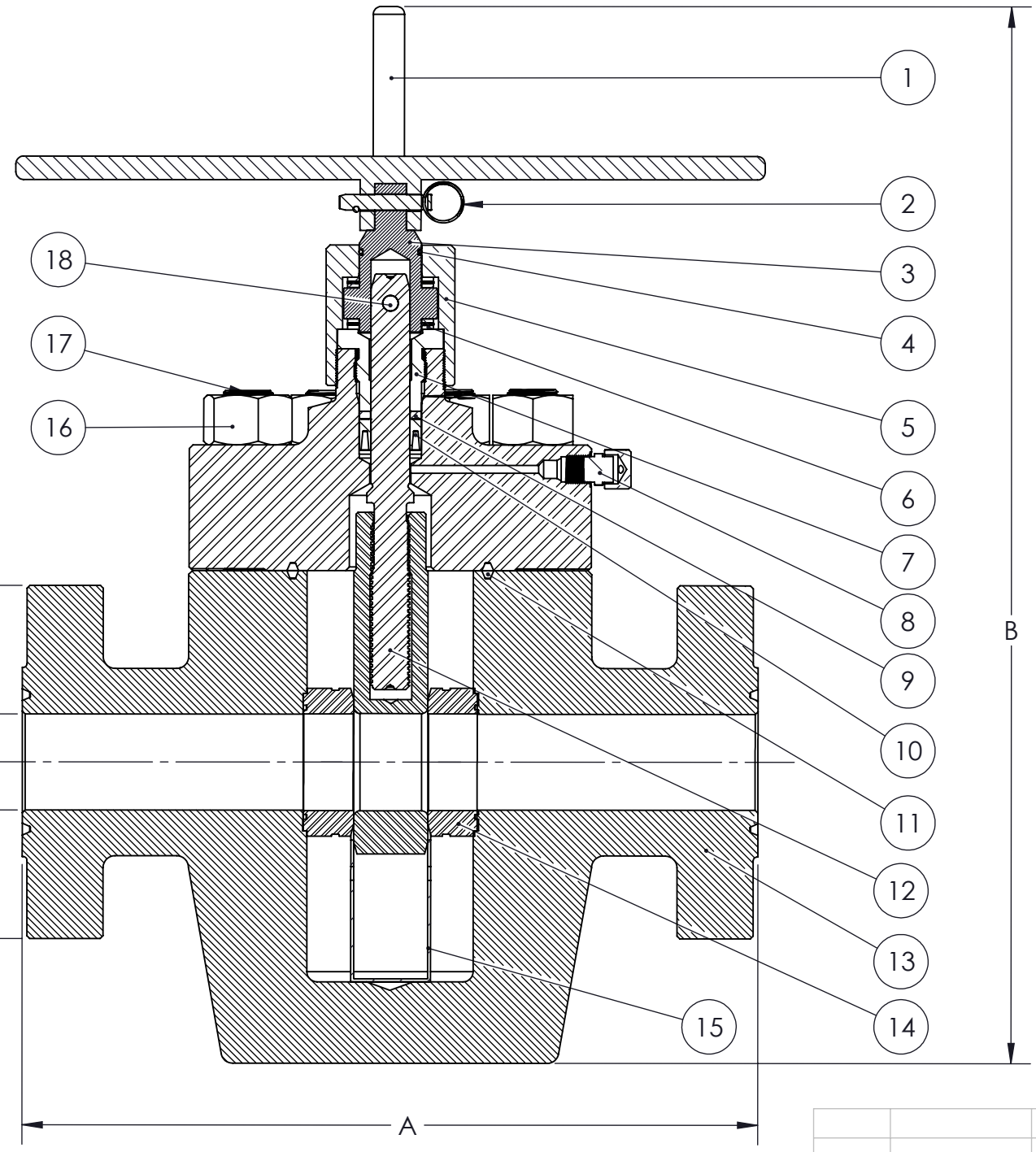
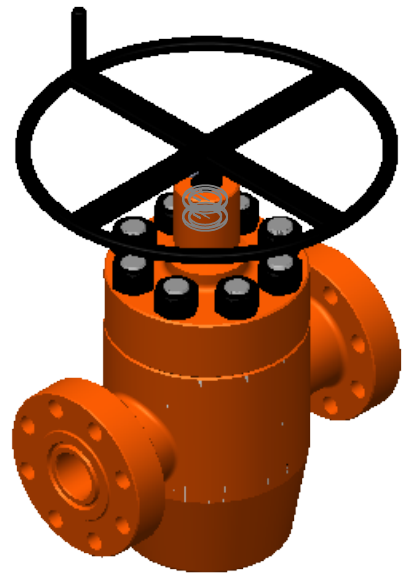
3

2

1

| FLS Style Valve Valve Size | Dimension | | | | Ring Gasket | Weight (lbs) | Handwheel |
|-------------------------------|-----------|-------|------|------|-------------|--------------|-----------|
| | A | B | C | D | R or RX | | Dia. (in) |
| 2 1/16" - 3,000 psi | 14.62 | 24.75 | 8.50 | 2.09 | 24 | 180 | 14 |
| 2 9/16" - 3,000 psi | 16.62 | 26.38 | 9.62 | 2.59 | 27 | 249 | 14 |
| 3 1/8" - 3,000 psi | 17.12 | 29.94 | 9.5 | 3.22 | 31 | 282 | 14 |
| 4 1/8" - 3,000 psi | 20.12 | 33.56 | 11.5 | 4.28 | 37 | 450 | 18.5 |

| ITEM NO. | DESCRIPTION | QTY. |
|----------|-----------------------|------|
| 1 | Handwheel | 1 |
| 2 | Retainer Pin | 1 |
| 3 | Stem Adapter | 1 |
| 4 | O Ring | 1 |
| 5 | Bearing Cap | 1 |
| 6 | Bearing Race | 4 |
| 6 | Thrust Bearing | 2 |
| 7 | Packing Gland Nut | 1 |
| 8 | Grease Injection Plug | 1 |
| 9 | Back-Up Ring | 1 |
| 10 | Stem Seal | 1 |
| 11 | Ring Gasket | 1 |
| 12 | Stem | 1 |
| 13 | Body GV | 1 |
| 14 | Seat | 2 |
| 15 | Seat Retainer | 1 |
| 16 | Hex Nut | 8 |
| 17 | Stud | 8 |
| 18 | Dowel Pin | 1 |



ϕC
 ϕD Max.

PROPRIETARY AND CONFIDENTIAL
 THE INFORMATION CONTAINED IN THIS DRAWING IS THE SOLE PROPERTY OF HESHKA OIL. ANY REPRODUCTION IN PART OR AS A WHOLE WITHOUT THE WRITTEN PERMISSION OF HESHKA OIL IS PROHIBITED.

UNLESS OTHERWISE SPECIFIED:
 DIMENSIONS ARE IN INCHES
 TOLERANCES:
 FRACTIONAL: $\pm 1/64"$
 ANGULAR: $\pm 1/2$ Degree
 x.x $\pm .03$
 x.xx $\pm .01$
 x.xxx $\pm .005$
 Surface Finish 125RMS Unless Otherwise Noted
 (X.XXX) INDICATES CRITICAL DIMENSION TO BE INSPECTED

| | NAME | DATE |
|-----------|------|-----------|
| DRAWN | FBR | 9/20/2019 |
| CHECKED | MJKP | 9/26/2019 |
| ENG APPR. | MJKP | 9/26/2019 |
| MFG APPR. | | |
| Q.A. | | |



TITLE:
 2-1/16" thru 4-1/16" 3,000 psi
 FLS Style GV
 Data Sheet

| REV. | ECN Number | Date |
|------|------------|------|
| | | |
| | | |
| | | |
| | | |

MATERIAL: NA
 FINISH: DO NOT SCALE DRAWING

SIZE: **B** DWG. NO.: MKT-FLS-GV REV: **A**
 SCALE: NTS WEIGHT: SHEET 1 OF 1

4

3

2

1